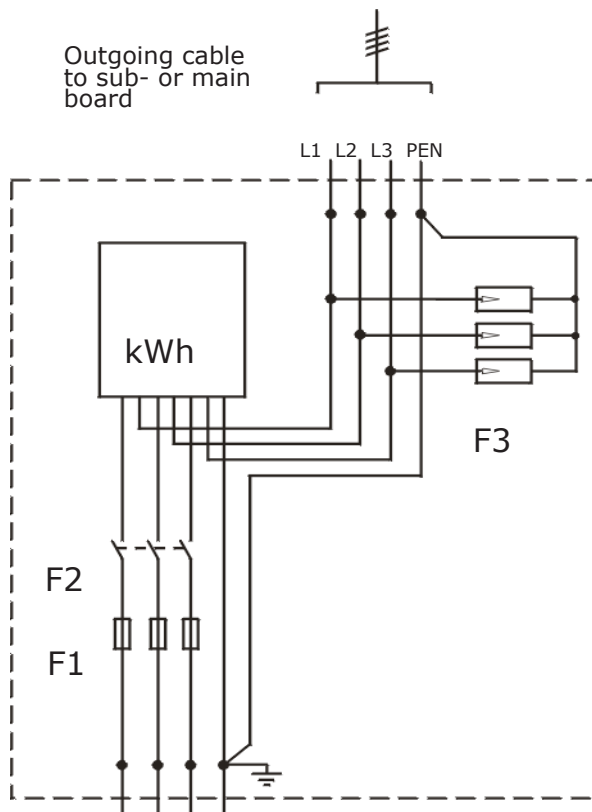




Installation guide

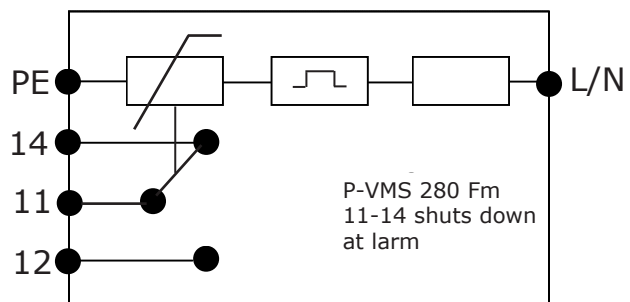
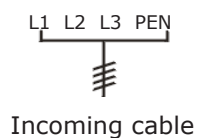
Overvoltage arrester P-VMS



Overvoltage arrester P-VMS 280

The P-VMS 280 is an arrester with a rating of requirement C according to DIN VDE 0675. The P-VMS 280 arrester is designed for lightning protection in 400/230V low voltage networks.

- P-VMS 280 is installed in the sub- or main distribution board of electrical power installations.
- Incoming 4-wire with PEN-leader are connected with 3-pole, 5-wire with 4-pole.
- Max. back-up fuse for DIN rail mounting is 125A. Higher back-up fuse requires that a primary fuse i.e. 63A is mounted.
- Connection cable must be of same dimensions as either main cable or primary fuse.
- Earth wire should be as short as possible.



F1	=	Main fuse
F2	=	Main circuit breaker (in five-wire systems a 4-pole breaker should be used)
F3	=	Overvoltage arrester
L1, L2, L3	=	Phase wire
PEN	=	Combined earth and neutral
-----	=	Main meter panel